







Planting Trees

Planting trees increases water quality by reducing soil erosion, pollutants, and storm water runoff into our waterways. Native species are especially important near waterways because they can act as a buffer to block pollution from entering the water. Help support local water quality by planting native species in your backyard today!

Quick Tips

-  Dig a shallow, broad planting hole
-  Straighten the tree in the hole
-  Fill the hole gently but firmly
-  Stake the tree, if necessary
-  Mulch the base of the tree
-  Provide follow-up care

www.waterlooleisureservices.org/forestry/proper-tree-planting-techniques



**Questions? Please contact
the SCIT Water Quality Staff at:**



Planning Department
7070 E. Broadway
Mt. Pleasant, MI 48858



989.775.4014



*Working Together to
Protect Our Environment*

www.sagchip.org



**FREE TREE
GIVEAWAY**

**Saturday,
April 28, 2018**



*Working Together to
Protect Our Environment*

Red Osier Dogwood

- **Full grown height:** 7-9 ft.
- **Sun preference:** Full sun/ partial shade
- **Soil/water requirements:** moist, wet, well-drained
- **Berries/flowers/seeds:** White berries that flower



Photo credit: macphailwoods.org/nature-guides/shrubs/red-osier-dogwood/

Silky Dogwood

- **Full grown height:** 6-10 ft.
- **Sun preference:** Full sun-shade
- **Soil/water requirements:** Moist, wet, well-drained
- **Berries/flowers/seeds:** Small white flowers



Photo credit: florapittsburghensis.wordpress.com/2012/06/01/silky-dogwood-cornus-amomum/

White Spruce

- **Full grown height:** 40-60 ft.
- **Sun preference:** Full sun
- **Soil/water requirements:** Moist, wet, well-drained
- **Berries/flowers/seeds:** Pine cones cylindrical 1.5"-2.5" long



Photo credit: www.missouribotanicalgarden.org/PlantFinder/FullImageDisplay.aspx?documentid=8350

Ninebark

- **Full grown height:** 40-60 ft.
- **Sun preference:** Full sun/part shade
- **Soil/water requirements:** Moist, wet, well-drained
- **Berries/flowers/seeds:** White flowers



Source: By Jean-Pol GRANDMONT - Own work, CC BY-SA 3.0.
Phot credit: muskokaconservancy.org/shop/native-plant-sale/common-ninebark/

Sycamore

- **Full grown height:** 100 ft
- **Sun preference:** Half-full sun
- **Soil/water requirements:** Clay, loam acidic, neutral, alkaline
- **Berries/flowers/seeds:** Brown spiky seed balls



Source: plants.usda.gov Photo credit: davesgarden.com/guides/articles/view/887

Black Willow

- **Full grown height:** 75-100 ft.
- **Sun preference:** Full sun
- **Soil/water requirements:** Moist, wet, well-drained
- **Berries/flowers/seeds:** Seeds disperse in spring and immediately germinate, Catkins on ends of leafy shoots, small, yellow-green flowers without petals



Source: www.extension.iastate.edu/forestry/iowa_trees/trees/black_willow.html
Photo credit: en.wikipedia.org/wiki/Salix_nigra

Black Elderberry

- **Full grown height:** 5-12 ft.
- **Sun preference:** Full sun
- **Soil/water requirements:** moist to well-drained soil, will tolerate range of soil texture and fertility
- **Berries/flowers/seeds:** Berries can be harvested August to early September



White Cedar

- **Full grown height:** 50-60 ft.
- **Sun preference:** Half-full sun
- **Soil/water requirements:** Moist, well-drained
- **Berries/flowers/seeds:** Small cone ripens in fall of first year

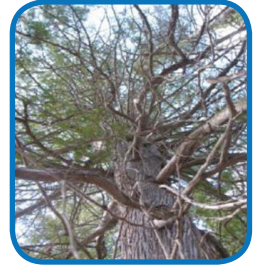
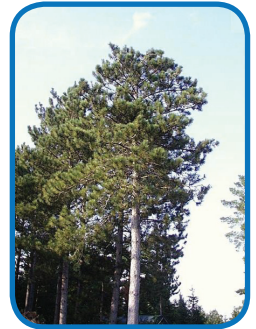


Photo & information credit: www.dnr.state.mn.us/trees_shrubs/conifers/whitecedar.html

Red Pine

- **Full grown height:** 70+ ft.
- **Sun preference:** Full sun
- **Soil/water requirements:** Moist, sandy loam
- **Berries/flowers/seeds:** Red pine cones



White Paper Birch

- **Full grown height:** 40-50 ft.
- **Sun preference:** Full-partial sun
- **Soil/water requirements:** Moist, loamy-sandy soils
- **Berries/flowers/seeds:** Brown/green catkins in April and May, seeds elliptical shape with two wings

