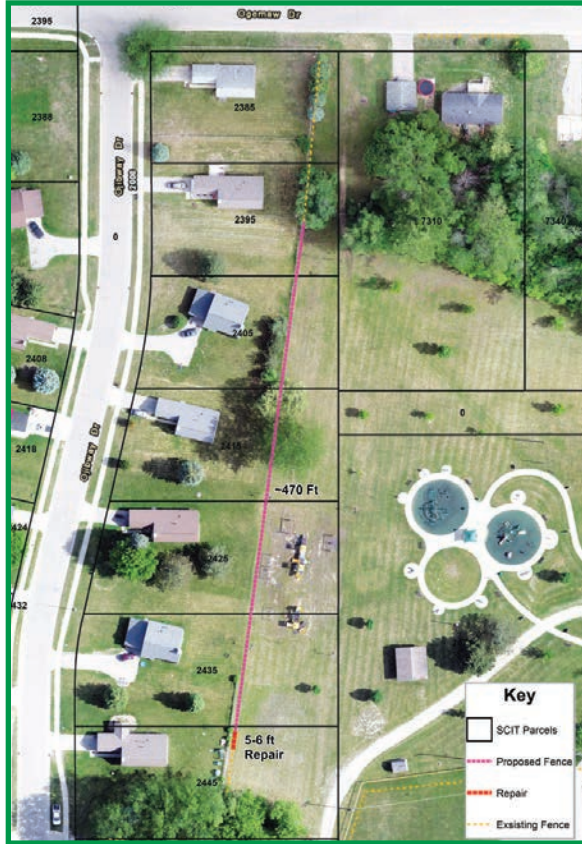


Request for Quotes

Installation of Chain Link Fence



The Saginaw Chippewa Housing Department is seeking to install two chain link fences on the east and west sides along Ojibway Drive, Mt. Pleasant, MI.

Project Overview:

- Install 1,174 linear feet of 5 foot high chain link fence.
- The fencing needed for location 1 is approximately 726 linear feet, five feet above ground.
- The fencing needed for location 2 is approximately 476 linear feet, five feet above ground.

Forms and more information are available at:

www.sagchip.org/housing

Submission deadline:

June 1, 2021 by 5 p.m.

Proposals must be dropped off or mailed to:

SCHD
2451 Nish-Na-Be-Anong Drive
Mount Pleasant, MI 48858

Or emailed to:

Rosalie Maloney
Housing Manager

• **Email:** romaloney@sagchip.org



Saginaw Chippewa Indian Tribe of Michigan

"Working Together for Our Future"

7500 Soaring Eagle Blvd.
Mount Pleasant, MI 48858
989-775-4000
www.sagchip.org